

HEALTH ECONOMICS AND OUTCOMES RESEARCH FELLOWSHIP 2024-2026



RUTGERS
Health Outcomes,
Policy, and Economics

PROGRAM STRUCTURE

YEAR

1

The Fellow will develop foundational knowledge and skills through didactic and applied learning.

The Fellow will spend four days per week at GSK working in the Global Value Evidence and Outcomes department and one day per week at the Center for Health Outcomes, Policy, and Economics (HOPE) at Rutgers University. The Fellow may enroll in graduate courses toward the Rutgers Master of Science in Health Outcomes, Policy, and Economics (MS-HOPE). Additionally, the Fellow will be encouraged to participate in a teaching activity at Rutgers and will be provided with opportunities to engage in academic research, publishing and attend at least one national conference (virtually or in person).

YEAR

2

The Fellow will continue building upon the skills gained in the first year through didactic and

applied learning, and will work with increased independence, responsibility, and leadership opportunities. The Fellow may spend five days a week at GSK, transitioning out of academic research at the HOPE center. The Fellow may continue taking graduate courses towards the MS-HOPE program and will attend at least one national conference during the second year (virtually or in person).

LEARNING EXPERIENCES

The Fellow will have a broad experience in Global Value Evidence and Outcomes (VEO) by supporting asset development across the drug's life cycle from preclinical development to post marketing efforts spanning multiple therapeutic areas:

- Global value assessment of pharmaceuticals
- HEOR methodology
- Protocol development
- IRB processes
- Research contracting
- Study management
- Data collection and management
- Database analyses
- Scientific writing

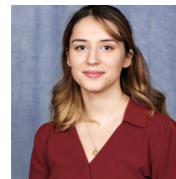
CURRENT FELLOWS



2022-2024 Fellow
Samantha Valliant, PharmD
Global Fellow



2022-2024 Fellow
Lydia Lee, PharmD
U.S. Fellow



2023-2025 Fellow
Kejsi Begaj, PharmD
Global Fellow



2023-2025 Fellow
Alin Kalayjian, PharmD, MBA
U.S. Fellow

WHO WE ARE



GSK is a global healthcare company with a special purpose: to unite science, talent and technology to get ahead of disease together. We prevent and treat disease with vaccines, specialty, and general medicines with ambition, accountability, and responsibility. Our goal is to be one of the world's most innovative, best performing and trusted healthcare companies. GSK's motivation is to positively impact the health of 2.5 billion people with our medicines and technologies over the next ten years.



RUTGERS

Health Outcomes,
Policy, and Economics

The Rutgers University Center for Health Outcomes, Policy, and Economics partners with scientists, clinicians and stakeholders from academia, pharmaceutical, biotech, and other marketplace innovators to conduct interdisciplinary research that produces relevant, meaningful health outcomes, economic models and analyses to facilitate the adoption of cost-effective healthcare and improve patient outcomes.



"My experience at GSK and previous experience at Bristol Myers Squibb working with Rutgers Fellows has demonstrated that the pharmacist provides a unique perspective on value demonstration and incorporation in the marketplace."

On behalf of everyone at GSK, I invite you to consider joining our community dedicated to helping patients and progressing science, and I wish you the best of luck during the recruitment process."

John Graham, PharmD

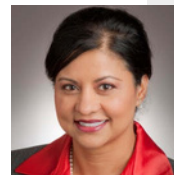
Senior Vice President, Value Evidence and Outcomes



"As the program sponsor, I strive to provide an environment where the Fellows can leverage their strengths, pursue their ambitions and achieve their development goals. It is my passion to provide mentorship and make a positive impact in the professional journey of the Fellows."

Marcia Rupnow, PhD

Vice President, Value Evidence and Outcomes
Fellowship Sponsor



"The Rutgers University Center for Health Outcomes, Policy, and Economics (HOPE) and GSK have a close-knit partnership that offers an exciting fellowship program in Health Economics and Outcomes Research (HEOR). Our collaborative program combines academic HEOR training through the HOPE center with applied biopharmaceutical experience at GSK. This experience provides an integrated balance of conceptual research training, courses, and seminars with a unique opportunity to – firsthand – apply these skills in a real-world setting."

Zeba Khan, PhD

HOPE Program Director

APPLICATION & ELIGIBILITY

Selection of the Fellows will be from a competitive national pool of candidates with doctoral and/or clinical training and a demonstrated interest in health economics and outcomes research.

Interested individuals may apply by submitting the following by **Wednesday, October 18th at 11:59 PM ET** to the link below:

- **Curriculum Vitae**
- **Personal statement describing your interest in the fellowship and the HEOR field (1-page limit)**
- **Unofficial Transcript**

*Per Rutgers, The State University of New Jersey, selected applicants must provide **evidence of legally working authorization in the United States without needing sponsorship.***

Candidates are considered on a rolling basis. Early applications are encouraged.

First-Round Virtual Interview: October 23

Final Offer: December 13

Competitive candidates will be invited to the second-round virtual interview and will be required to submit an official university transcripts and three letters of recommendation.

Recruiting Positions: 1 Global and 1 U.S.

Application Submission Instructions:

Submit your application materials to:

https://rutgers.ca1.qualtrics.com/jfe/form/SV_4SzRhGWgGH6QFbE

Please address your letter of intent and letters of recommendation to:

Zeba Khan, PhD
Program Director

GSK/Rutgers HOPE Fellowship
160 Frelinghuysen Road, Suite 417
Piscataway, NJ 08854 USA

Website: hope.rutgers.edu

Address questions: pb729@pharmacy.rutgers.edu



GSK Campus
Collegeville, Pennsylvania



**Health Outcomes, Policy, and Economics (HOPE) Center at
Ernest Mario School of Pharmacy, Rutgers University**
Piscataway, New Jersey

Rutgers is an Equal Opportunity/Affirmative Action Employer. Rutgers is also an ADVANCE institution, one of a limited number of universities in receipt of NSF funds in support of our commitment to increase diversity and the participation and advancement of women in the STEM disciplines.